

### Angled Ball Drip Valves

**Feature**

- Seals automatically under pressure

**Specifications**

- Installed horizontally, the ball seats at approximately 8-10 PSI
- Working pressure: 175 PSI at 70°F (21°C)

Male NPT	Male NPT	Brass Part #
1/2"	1/2"	ASBDV50
3/4"	3/4"	ASBDV75



### Straight Ball Drip Valves

**Application**

- Designed to drain the low point of a system

**Features**

- Place valve between a fire department connection and a swing check valve
- Seals automatically under pressure
- Install horizontally

**Specification**

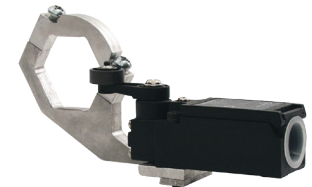
- Working pressure: 175 PSI at 70°F (21°C)

Male NPT	Male NPT	Brass Part #
1/2"	1/2"	SBDV50
3/4"	3/4"	SBDV75



### Factory Set Pressure Reducing Brass Standard Globe Valve Accessories

Description	Part #
2-1/2" tamper switch bracket kit (indicator cap, nut, switch, bracket)	4201901587
switch bracket only, red	18-458-00017
replacement handles for 1-1/2" valves	AV150-W
replacement handles for 2-1/2" valves	46-030-00025



4201901587



18-458-00017

