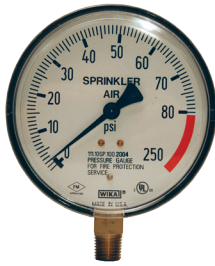




### Sprinkler System Gauge (UL-393)



**Application**

- Specifically designed for the fire sprinkler industry

**Size**

- 1/4" NPT lower mount

**Features**

- Bourdon tube pressure gauges with black polycarbonate case
- Snap-in clear polycarbonate window, 4" face
- White aluminum dial with stop pin, black and red markings
- Black aluminum non-adjustable pointer

**Specification**

- Temperature range: -40°F to 140°F (-40°C to 60°C)

**Approvals**

- ASME B40.1 Grade B (+ 3/2/3% accuracy)
- UL Listed and FM Approved for fire sprinkler service

Type	Part #
water (0-300 PSI)	SWG300-4

### Line Test Gauges



**Application**

- Used for testing static or flowing pressures in hoses or nozzles

**Features**

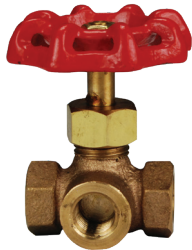
- Rocker lug swivel
- Other sizes and threads are also available; contact Dixon®

**Specifications**

- Supplied with 0-300 PSI glycerine-filled 3-1/2" diameter gauge
- Freeze proof to -40°F (-40°C)

NST (NH) Thread	Hardcoated Aluminum Part #
1-1/2"	ALTG150F
2-1/2"	ALTG250F

### Three Way Gauge Valve



**Application**

- Permits checking or replacing a gauge without shutting down the whole line

**Material**

- Disc: rubber

NPT Thread	Working Pressure (PSI)	Brass Part #
1/4"	175	TWGV25

### PITOT Gauge



**Feature**

- Supplied with handle grip, case, and fire stream/friction loss data

**Specification**

- Liquid-filled gauge: 0-160 PSI is standard, other pressures available; contact Dixon

Part #
PG8083

### Sprinkler Line Tester



**Application**

- Installs on the last sprinkler head on system branch lines and controls water flow for flushing or testing the system

Inlet	Outlet	Brass Part #
1" female NPT	1" male NPSH	SLT10050